

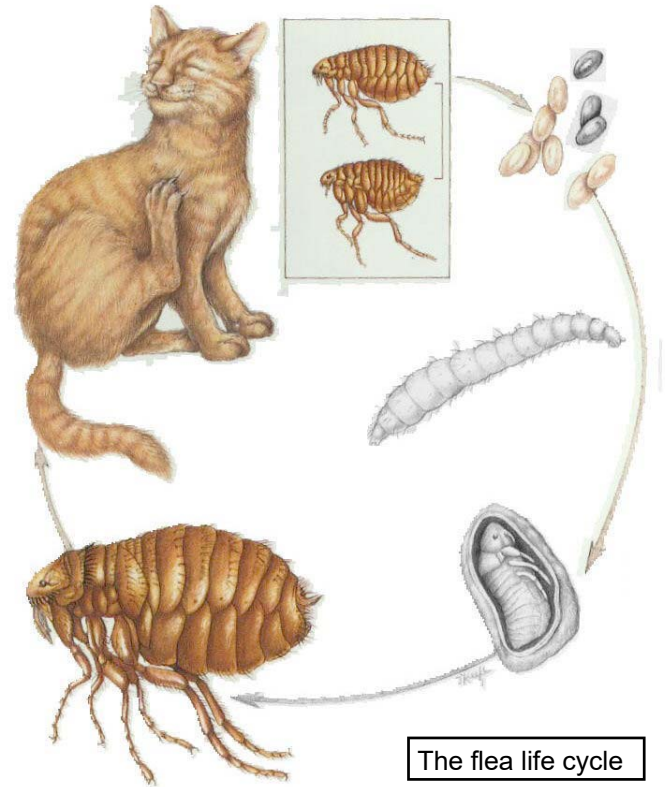


FLEAS AND YOUR PET

Fleas are small, brown or black, wingless insects with flattened bodies. These blood-sucking insects infest the hair coat of animals, and occasionally will feed on people. They can cause considerable distress and skin irritation. In severe infestations, anemia may result from blood loss. Fleas can also spread the common dog and cat tapeworm, as well as other viral and bacterial diseases.

After taking a blood meal, fleas deposit their eggs on the animal and as the pet moves about, eggs are spread through the environment. A single breeding pair of fleas can produce 20,000 fleas in just three months. Eggs hatch after 2 to 12 days into larvae that feed in the environment. Larvae molt 2 times, and the older larvae spin a cocoon in which they can remain for up to one year. A hungry flea then emerges from the cocoon. The long period in which the larvae remain in the cocoon explains why fleas are so hard to eradicate from the environment.

To eradicate fleas, you must consider the fleas on your pet(s) as well as in the environment. There are many different products on the market to control fleas, all with variable efficacy. These include a variety of topical shampoos and insecticides, oral products, flea collars, and environmental sprays and flea bombs.



Treatment Recommendations for your Pet(s):

(Remember, all pets in the home should be treated)

We recommend using *Bravecto*. This is an oral product for dogs, topical product for cats, containing a drug called Fluralaner. *Bravecto* will kill adult fleas for up to four months, extending well past the life cycle of the average flea. Pets must be at least 6 months old to use *Bravecto*.

For puppies 8 weeks to 6 months of age, we recommend *Nexgard*. Also an oral product, the active drug is called afoxalaner. *Nexgard* must be given once a month with a 30-day duration of activity.

Treatment Recommendations for Your Home:

(Pay special attention to the areas where pets rest and sleep.)

1. Thoroughly vacuum all carpets, chairs, sofas, under furniture and along baseboards twice daily.
2. Discard vacuum bag immediately, or cleanse canister with warm soapy water if bag-less.
3. Wash bedding in hot water.
4. Wash hard floors with soap and water.
5. With moderate to severe infestations, sprays and foggers should be considered. With all commercial flea products, always read and follow labeled directions. Severe home infestations may require a professional exterminator.